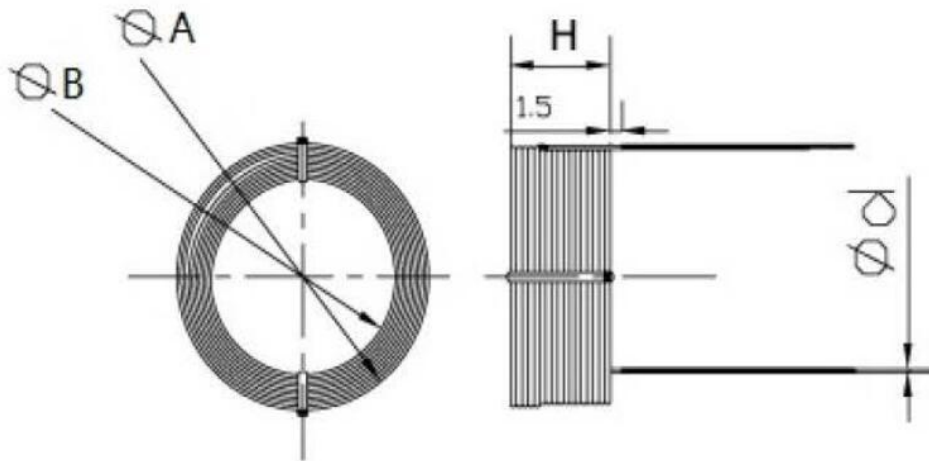


FEATURES

- Power type audio inductance, Better linear characteristics.
- Excellent heat audio dissipation characteristics, Suitable for working in high-frequency circuits. Suitable for bypass circuits
- High-purity copper wire, "baked" into a perfect shape to create a distortion-free inductor, for all audio applications. Modern self-supporting design with no need for plastic bobbins.
- Low inductance tolerance of $\pm 3\%$, $\pm 5\%$ and power handling depending on the wire used, makes it the most versatile coil on the market.

DRAWING (mm)



PICTURE



SIZE TABLE (mm): Inductance: 0.05~15mH, +/-5%

Series	A	B	H	d	Maximum Inductance
WIA	30	10	10	AWG24-AWG18	AWG24:1.6mH AWG18:0.3mH
WIA	30	10	16	AWG24-AWG18	AWG24:2.2mH AWG18:0.5mH
WIA	40	14	24	AWG24-AWG17	AWG24:6.0mH AWG17:3.0mH
WIA	35	15	19	AWG24-AWG18	AWG24:5.0mH AWG18:2.0mH
WIA	35	16	15	AWG24-AWG18	AWG24:3.5mH AWG18:1.5mH
WIA	40	18	15	AWG24-AWG17	AWG24:6.0mH AWG17:3.0mH
WIA	50	20	20	AWG24-AWG15	AWG24:5.0mH AWG15:0.5mH
WIA	50	20	40	AWG24-AWG15	AWG24:5.0mH AWG15:0.5mH
WIA	55	22	25	AWG24-AWG13	AWG24:6.0mH AWG13:1.0mH
WIA	60	25	40	AWG24-AWG13	AWG24:8.0mH AWG13:1.5mH
WIA	60	25	25	AWG24-AWG13	AWG24:10.0mH AWG13:2.5mH
WIA	70	25	40	AWG24-AWG13	AWG24:12.0mH AWG13:3.0mH



WEET Series-Wire Number-Inductance						
WEET PN	WEET PN	WEET PN	WEET PN	WEET PN	WEET PN	WEET PN
WIA-13-0.05	WIA-13-0.79	WIA-15-0.05	WIA-17-0.05	WIA-17-0.48	WIA-18-0.05	WIA-24-0.05
WIA-13-0.1	WIA-13-0.8	WIA-15-0.08	WIA-17-0.08	WIA-17-0.49	WIA-18-0.1	WIA-24-0.1
WIA-13-0.11	WIA-13-0.82	WIA-15-0.1	WIA-17-0.1	WIA-17-0.5	WIA-18-0.11	WIA-24-0.2
WIA-13-0.12	WIA-13-0.85	WIA-15-0.12	WIA-17-0.107	WIA-17-0.52	WIA-18-0.12	WIA-24-0.3
WIA-13-0.14	WIA-13-0.9	WIA-15-0.135	WIA-17-0.11	WIA-17-0.53	WIA-18-0.14	WIA-24-0.4
WIA-13-0.15	WIA-13-0.95	WIA-15-0.15	WIA-17-0.12	WIA-17-0.55	WIA-18-0.15	WIA-24-0.5
WIA-13-0.16	WIA-13-1	WIA-15-0.17	WIA-17-0.135	WIA-17-0.56	WIA-18-0.16	WIA-24-0.62
WIA-13-0.18	WIA-13-1.1	WIA-15-0.174	WIA-17-0.15	WIA-17-0.58	WIA-18-0.18	WIA-24-0.7
WIA-13-0.19	WIA-13-1.2	WIA-15-0.18	WIA-17-0.16	WIA-17-0.6	WIA-18-0.19	WIA-24-0.8
WIA-13-0.2	WIA-13-1.3	WIA-15-0.185	WIA-17-0.17	WIA-17-0.62	WIA-18-0.2	WIA-24-0.9
WIA-13-0.21	WIA-13-1.4	WIA-15-0.19	WIA-17-0.18	WIA-17-0.64	WIA-18-0.22	WIA-24-1
WIA-13-0.22	WIA-13-1.5	WIA-15-0.2	WIA-17-0.19	WIA-17-0.65	WIA-18-0.24	WIA-24-1.5
WIA-13-0.24	WIA-13-1.55	WIA-15-0.22	WIA-17-0.2	WIA-17-0.68	WIA-18-0.26	WIA-24-2
WIA-13-0.26	WIA-13-1.6	WIA-15-0.24	WIA-17-0.21	WIA-17-0.7	WIA-18-0.27	WIA-24-2.5
WIA-13-0.27	WIA-13-1.7	WIA-15-0.25	WIA-17-0.22	WIA-17-0.73	WIA-18-0.3	WIA-24-2.7
WIA-13-0.3	WIA-13-1.8	WIA-15-0.26	WIA-17-0.23	WIA-17-0.75	WIA-18-0.32	WIA-24-2.8
WIA-13-0.32	WIA-13-1.85	WIA-15-0.27	WIA-17-0.24	WIA-17-0.76	WIA-18-0.33	WIA-24-2.9
WIA-13-0.33	WIA-13-1.9	WIA-15-0.28	WIA-17-0.25	WIA-17-0.77	WIA-18-0.34	WIA-24-3
WIA-13-0.34	WIA-13-2	WIA-15-0.3	WIA-17-0.26	WIA-17-0.8	WIA-18-0.35	WIA-24-3.2
WIA-13-0.35	WIA-13-2.1	WIA-15-0.31	WIA-17-0.27	WIA-17-0.82	WIA-18-0.37	WIA-24-3.3
WIA-13-0.37	WIA-13-2.	WIA-15-0.32	WIA-17-0.28	WIA-17-0.85	WIA-18-0.38	WIA-24-3.45
WIA-13-0.38	WIA-13-2.3	WIA-15-0.33	WIA-17-0.29	WIA-17-0.87	WIA-18-0.39	WIA-24-3.6
WIA-13-0.385	WIA-13-2.4	WIA-15-0.35	WIA-17-0.3	WIA-17-0.88	WIA-18-0.4	WIA-24-3.7
WIA-13-0.39	WIA-13-2.5	WIA-15-0.36	WIA-17-0.32	WIA-17-0.9	WIA-18-0.41	WIA-24-3.9
WIA-13-0.4	WIA-13-2.6	WIA-15-0.37	WIA-17-0.33	WIA-17-0.95	WIA-18-0.42	WIA-24-4
WIA-13-0.41	WIA-13-2.7	WIA-15-0.383	WIA-17-0.34	WIA-17-0.96	WIA-18-0.47	WIA-24-4.1
WIA-13-0.42	WIA-13-2.75	WIA-15-0.39	WIA-17-0.35	WIA-17-1	WIA-18-0.49	WIA-24-4.5
WIA-13-0.47	WIA-13-2.9	WIA-15-0.4	WIA-17-0.36	WIA-17-1.1	WIA-18-0.54	WIA-24-4.7
WIA-13-0.49	WIA-13-3	WIA-15-0.41	WIA-17-0.37	WIA-17-1.2	WIA-18-0.56	WIA-24-5
WIA-13-0.51	WIA-17-2.2	WIA-15-0.42	WIA-17-0.38	WIA-17-1.3	WIA-18-0.6	WIA-24-5.6
WIA-13-0.53	WIA-17-2.3	WIA-15-0.43	WIA-17-0.39	WIA-17-1.4	WIA-18-0.62	WIA-24-6
WIA-13-0.54	WIA-17-2.4	WIA-15-0.44	WIA-17-0.4	WIA-17-1.5	WIA-18-0.65	WIA-24-6.2
WIA-13-0.56	WIA-17-2.5	WIA-15-0.45	WIA-17-0.42	WIA-17-1.6	WIA-18-0.68	WIA-24-6.4
WIA-13-0.6	WIA-17-2.6	WIA-15-0.46	WIA-17-0.43	WIA-17-1.7	WIA-18-0.78	WIA-24-6.8
WIA-13-0.62	WIA-17-2.7	WIA-15-0.47	WIA-17-0.44	WIA-17-1.8	WIA-18-0.8	WIA-24-7
WIA-13-0.65	WIA-17-2.8	WIA-15-0.48	WIA-17-0.45	WIA-17-1.9	WIA-18-0.82	WIA-24-7.2
WIA-13-0.68	WIA-17-2.9	WIA-15-0.49	WIA-17-0.46	WIA-17-2	WIA-18-0.85	WIA-24-8
WIA-13-0.76	WIA-17-3	WIA-15-0.5	WIA-17-0.47	WIA-17-2.1	WIA-18-0.9	WIA-24-8.2
WIA-18-0.95	WIA-18-1.2	WIA-18-1.5	WIA-18-1.8	Other Inductance and Size are available on request, WEET is capable of doing custom service OEM for you.		
WIA-18-1.0	WIA-18-1.3	WIA-18-1.6	WIA-18-1.9			
WIA-18-1.1	WIA-18-1.4	WIA-18-1.7	WIA-18-2			



WEE Technology Company Limited
ROOM 1405, 14/F, LUCKY CENTRE,
171 WANCHAI ROAD,
WANCHAI, HONG KONG
www.musicaps.com
sales@musicaps.com

All details in this data sheet are subject to change without notice.
For more details and updates, please visit our website.

Copyright © 2000 WEE Technology, All rights reserved.

