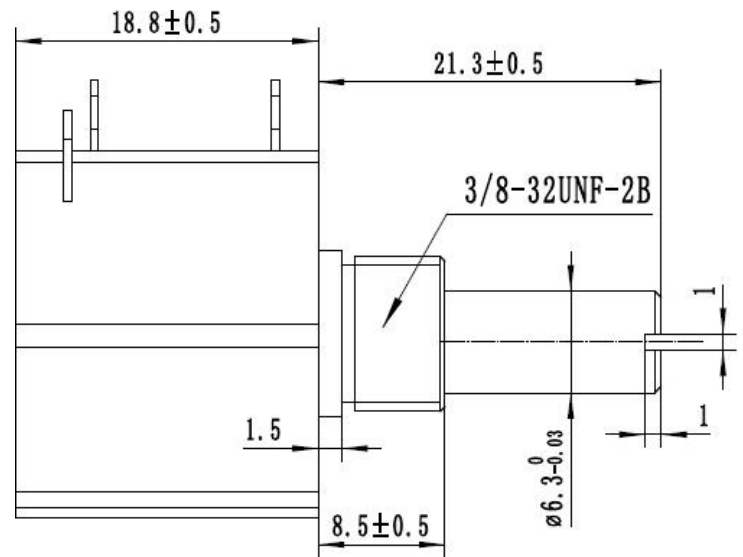
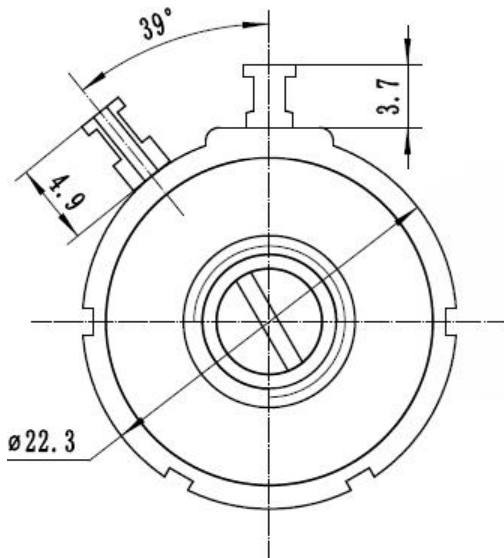


FEATURES

- Rated Power: 2W
- 10 Turns
- Precision Adjustable
- Reliable Performance
- Small Size
- High Precision

DIMENSION: mm

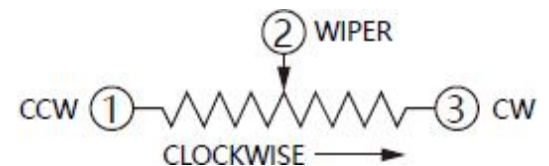


DIMENSIONS: MM

TOLERANCES: ±0.3 MM EXCEPT WHERE NOTED

Electrical Characteristics

Standard Resistance Range	100Ω-100KΩ
Resistance Tolerance	±5%
Linearity	±0.5%
Effective Electrical Stroke	≥3600°-10°
Terminal resistance	≤0.2%R or 5Ω
Rotating Noise	≤3%R or 3Ω
Insulation Resistance	RI ≥ 1GΩ
Withstanding Voltage	101.3kPa 710V, 8.5kPa 470V



Support special customization (5 turns/3 turns, semicircular shaft/flat shaft, long shaft/short shaft and etc)



Environmental Characteristics	
Power Rating(300 volts max.)	2W@+70°C, 0W@+125°C
Operating Temp. Range	-55°C~+125°C
Temperature Coefficient	±100ppm/°C
Temperature Variation	$\Delta R \leq 2\%R$, $\Delta(U_{ab}/U_{ac}) \leq \pm 1\%$
Collision	390m/s ² , 4000cycles, $R \leq \pm 1\%R$
Vibration	10-500Hz,0.75mm, or 98m/s ² , 6h $\Delta R \leq \pm 1\%R$. $\Delta(U_{ab}/U_{ac}) \leq \pm 2\%$
Climate Sequence	$\Delta R \leq \pm 3\%R$, $RI \geq 100M\Omega$
70°C Electrical Endurance	2W, 1000h, $\Delta R \leq \pm 3\%R$
Rotational Life	10000(cycles), $\Delta R \leq \pm 3\%R$
Steady State Heat	$\Delta R \leq \pm 3\%R$, $RI \geq 100M\Omega$

Physical Characteristics	
Mechanical Angle	3600°±10°
Starting Torque	≤36 mN.m
Stop Strength	≤300 mN.m
Standard Packaging	25/50 Pieces/Inner Box, 200 Pieces/Carton.

Note: Please visit our website to get more update data, those data & specification are subject to change without notice.



PN STRUCTURE

WTP-7286-102-R

<u>WTP</u>	<u>7286</u>	<u>102</u>	<u>R</u>
<u>Series</u>		<u>Resistance</u>	<u>RoHS</u>
<u>1</u>		<u>2</u>	<u>3</u>

2. **Resistance** (Special Resistances Available)

Resistance (Ohms)	Resistance Code
100	101
200	201
500	501
1,000	102
2,000	202
5,000	502
10,000	103
20,000	203
50,000	503
100,000	104

