

## FEATURES

- Rated Power: 2W
- Total Resistance 470Ω-2MΩ Total Resistance Tolerance ±10%

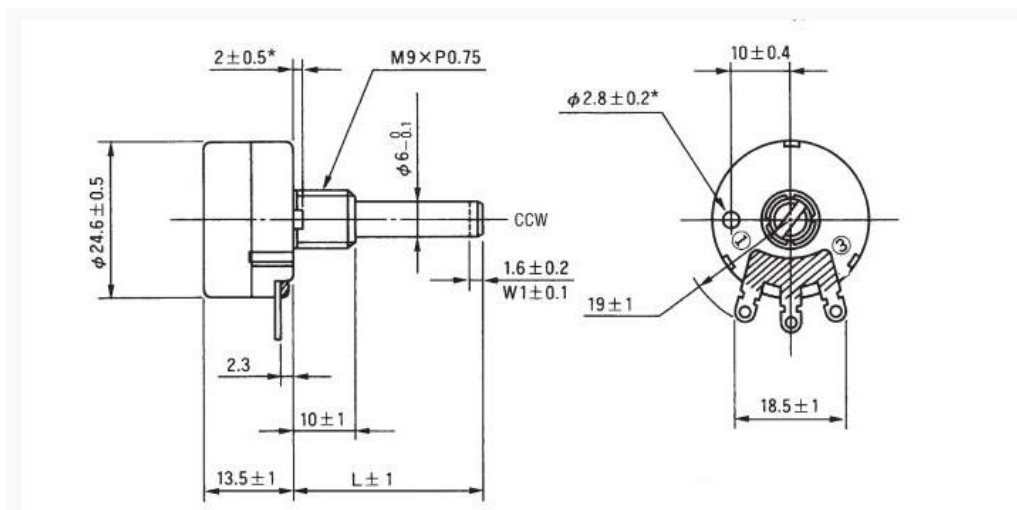


| Electrical Characteristics |                       |
|----------------------------|-----------------------|
| Total Resistance           | 470Ω-2MΩ              |
| Total Resistance Tolerance | ±10%                  |
| Resistance Taper           | B (Linear)            |
| Max. Operation Voltage     | AC 315V               |
| Rated Power                | 2W                    |
| Rotation Noise             | ≤47mV                 |
| Insulation Resistance      | ≥100MΩ at DC<br>1000V |
| Residual Resistance        | ≤3Ω                   |
| Withstand Voltage          | 1 min at AC 1000V     |

| Mechanical Characteristics          |                 |
|-------------------------------------|-----------------|
| Total Rotational Angle              | 300°±5°         |
| Rotational Torque                   | 51~306gf.cm     |
| Stop Torque                         | 8kgf.cm Max.    |
| Shaft Strength/Shaft Lever Strength | pull:5Kg.f Max. |
| Rotational Life                     | 15,000 cycles   |

## DIMENSION: mm



**PN STRUCTURE**

**WTP-D-102-R**

| <u>WTP</u>    | <u>D</u> | <u>102</u>        | <u>R</u>    |
|---------------|----------|-------------------|-------------|
| <u>Series</u> |          | <u>Resistance</u> | <u>RoHS</u> |
| <u>1</u>      |          | <u>2</u>          | <u>3</u>    |

2. **Resistance** (Special Resistances Available)

| <b>Resistance (Ohms)</b> | <b>Resistance Code</b> |
|--------------------------|------------------------|
| 100                      | 101                    |
| 200                      | 201                    |
| 500                      | 501                    |
| 1,000                    | 102                    |
| 2,000                    | 202                    |
| 5,000                    | 502                    |
| 10,000                   | 103                    |
| 20,000                   | 203                    |
| 50,000                   | 503                    |
| 100,000                  | 104                    |

